

# 2000T Full Revolving Crane Barge



**Specifications can be adjusted as per clients' requirements**

## **2000T Revolving Floating Crane Barge**

The barge is non-propelled heavy crane barge. The dynamic positioning system is GL DP1 class. The operating water depth is 200 m. A 2000t fully-revolving crane is also made and installed by

The four azimuth thrusters are able to rotate and move the barge in desired position during maximum lifting mode (2000t over stern and 1100t over side) within DP1 working sea state conditions.

The barge has fully air-conditioned accommodation for up to 238 people in cabins all with bathroom facilities.

**主要参数:**

**Main particulars**

船体总长 (L): 149.00m 船体型宽 (B): 40.00m 船体型深 (D): 11.00m 最大吃水 (Maximum Draft): 6.50m 吊重吃水 (Draft in Lifting Operation):

6.30m 住宿人数 (Accommodation): 238 P 载重量 (Deadweight): 9674t 排水量 (Displacement): 32052t 登记总吨 (GRT): 23317t 登记净吨 (NRT): 6995t 设计航区 (Sailing Area): 无限航区 (北极地区除外) Unlimited (excl. arctic area)



居住设施包括可容纳 238 人左右居住，同时还配备厨房，单独洗手间，干洗室，会议室，娱乐室，医疗室等为船员提供了舒适的工作生活环境。空调系统覆盖所有房间。

Our fully air-conditioned and comfortable accommodation includes different sized cabins meeting the needs of 238 people. Galley, individual bathroom, laundry, conference room, recreation room, medic room and other facilities provide staff a convenient living environment.

**船用发电机参数: Power Supply:**

- 主发电机组 (Main): 6 x 2800 KW  
3 Φ AC 6600V 60Hz Φ 0.8  
(MAN B&W 9L27/38)
- 停泊发电机组 (Harbour) 1200 kW  
3 Φ AC 450V 60Hz Φ 0.8  
(MAN B&W 6L21/31)
- 紧急发电机组 (Emergence): 315KW  
3 Φ AC 450V 60Hz Φ 0.8  
(CAT 6L3406)

**定位方式: Positioning system**

- 8 点锚泊定位方式，配 8 台单鼓锚绞车，每台提供 2900KN 拉力，钢丝绳 2100 米、直径 66 毫米。Eight-point positioning system, with eight single 2900KN drum winches, and wire rope of 2100m length and 66mm diameter.
- DP1 动力定位系统，配 4 个 1250kW 全回转伸缩推进器。DP1 system with 4\*1250kW azimuth thrusters.

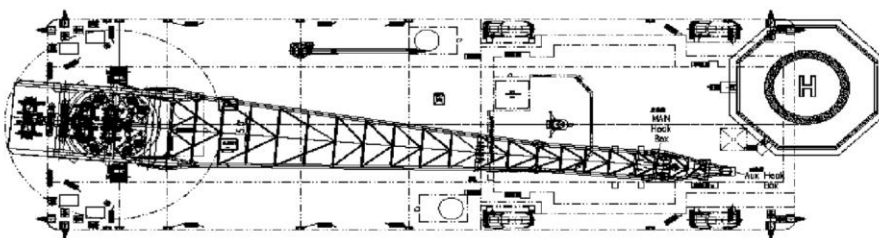
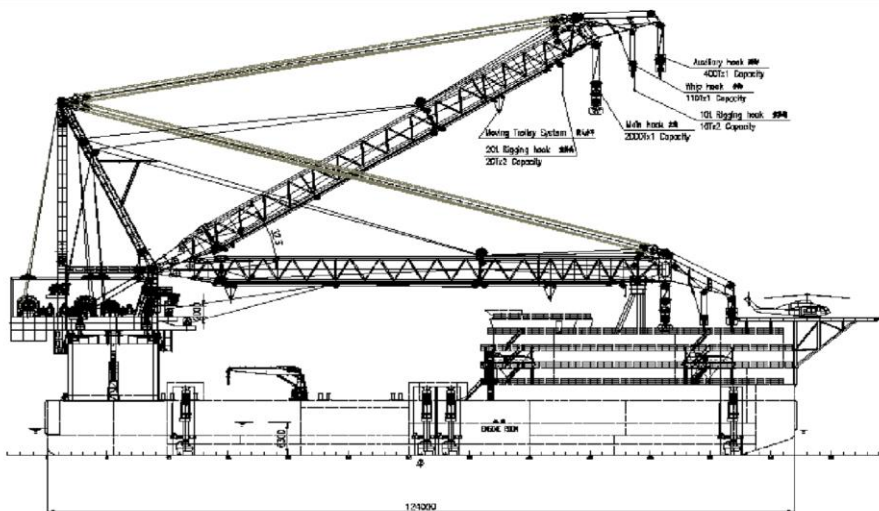
**直升机平台: Helicopter Deck**

- 适合停放(Suitable): 直径 22.3 米  
22.3 meter diameter
- 标准(Standard): ICAO and CAP 437

**辅助设备: Auxiliary equipment**

- 污水处理设备 Sewage treatment unit
- 足够的救生艇 Enough lifesaving boats and rafts.
- 齐全的通讯及警报设备  
Complete Communication & alarm device
- 充足的消防设备  
Adequate firefighting equipments

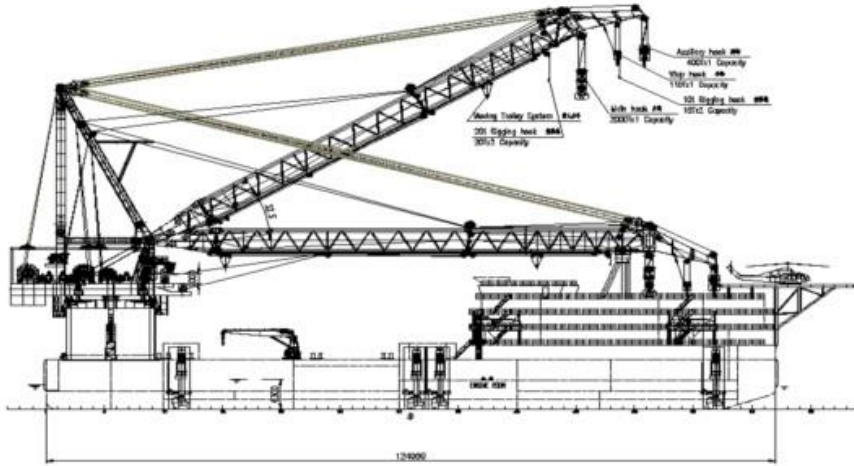
项目 Item		单位 Unit	主钩 Main Hook	副钩 Aux.Hook	小钩 Ringing	旋转 Revolving	变幅 Boom Hoisting
起重量 Lifting Capacity	固定时 Fixed at stern position	ton	2000t	400	110t	1100	
	旋转时 Revolving		1100t				
起升高度 (水上/水下) Lifting Height (above /under water)		m	100/5	113/200	110/5		
机构速度 Speed	空载 Without Load	m/min	0-7.0	0-24	0-45	0.25rpm	单程空载 15min
	带载 With Load		0-3.5	0-12	0-22.5	30min/r	Single-trip without load
电机功率×数量 Power × Quantity		KW	850×2	550×2	550×1	98×6	550×2
电机转速 Motor speed		rpm	750/1500	750/1500	750/1500	750/1500	750/1500



**2000 T Full Revolving Crane Barge Arrangement**



( 可视需要改变参数 Specifications can be adjusted as per requirements )



### 主参数 Main Particulars

总长 Length: 149.00m 型  
宽 Breadth: 40.00m 型深  
Depth: 11.00m 设计吃水  
Draft Design: 6.50m 最大吃水(吊重情况下): 6.30m  
Maximum for Lifting Operation  
住宿 Accommodation: 238 P  
船级 Class: GL